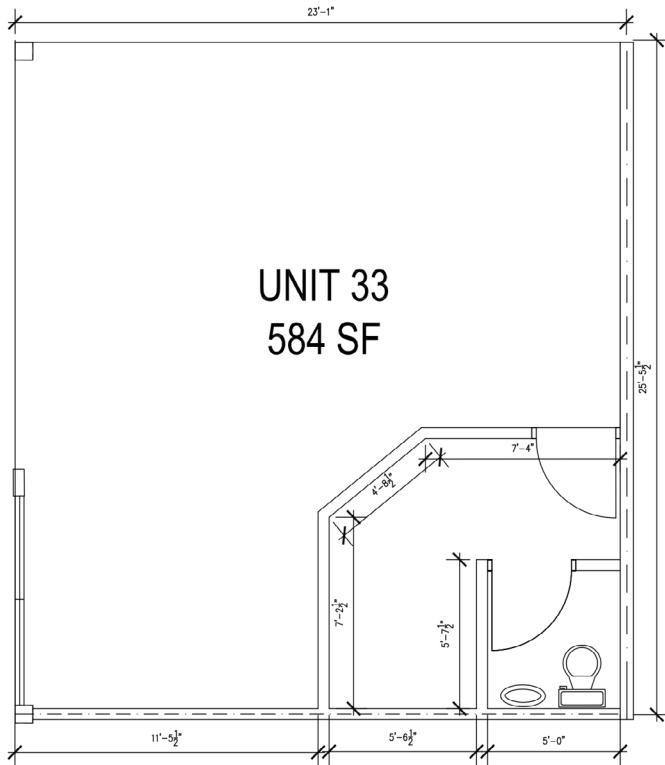


VACANCY PLAN



SITE PLAN



UNIT DETAILS

Date Available

Immediately

Description

Corner unit centrally located across from the Vancouver Island Regional Library and next to Shoppers Drug Mart's mall entrance, this unit features high visibility and lots of pedestrian traffic.

CONTACT

Ingus Silgailis
VP, Leasing

T 604 629 8130

C 604 230 3435

ingus@nwproperties.ca

Christoph Richter

VP, Portfolio Management

T 604 629 8132

C 604 220 3286

christoph@nwproperties.ca

Dave Mills

Property Manager

T 250 758 1102

C 250 713 6451

dave@nwproperties.ca

nwproperties.ca